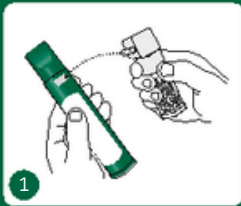




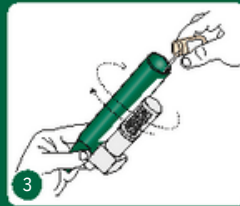
How to use Penthrox



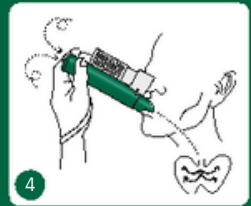
1 Ensure the Activated Carbon (AC) Chamber (where applicable) is inserted into the dilution hole on the top of the PENTHROX Inhaler.



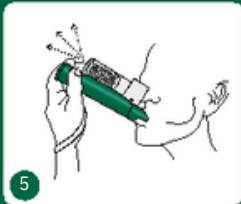
2 Holding the methoxyflurane bottle upright, use the base of the PENTHROX Inhaler to loosen the cap with a $\frac{1}{2}$ turn. Separate the Inhaler from the bottle and remove the cap by hand.



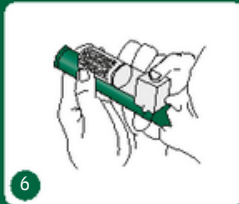
3 Tilt the PENTHROX Inhaler to a 45° angle and pour the contents of one 3mL bottle into the base whilst rotating and shake lightly.



4 Place wrist loop over patient's wrist. Patient inhales through the mouthpiece of Inhaler to obtain analgesia. First few breaths should be gentle and then breathe normally through Inhaler.



5 Patient exhales into Inhaler. The exhaled vapour passes through the AC Chamber to absorb any exhaled Methoxyflurane.



6 If stronger analgesia is required, patient can cover dilution hole with finger during inhalation.



7 Patient should be instructed to inhale intermittently to achieve adequate analgesia. Continuous administration will reduce time of analgesia. Patients should be administered minimum dose.



8 Replace cap on 3mL PENTHROX bottle, place used PENTHROX Inhaler in sealed plastic bag and dispose of responsibly after treatment.

For further information:

- Product Information sheet
- Penthrox Inhaler Information leaflet
- Consumer Medicine Information sheet

Penthrox[®]

methoxyflurane



Further information visit www.megamedical.com.au/penthrox

Before prescribing, please review Approved Product Information.

INDICATIONS: For emergency relief of pain by self administration in conscious haemodynamically stable patients with trauma and associated pain, under supervision of personnel trained in its use and for the relief of pain in monitored conscious patients who require analgesia for surgical procedures such as the change of dressings **CONTRAINDICATIONS:** Use as an anaesthetic agent; Renal impairment; renal failure; hypersensitivity to fluorinated anaesthetics (including familial history of hypersensitivity); cardiovascular instability; respiratory depression; head injury or loss of consciousness; malignant hyperthermia. **PRECAUTIONS:** Not to be used as an anaesthetic agent; Liver disease and liver damage after previous methoxyflurane or halothane anaesthesia; diabetic patients (may have an increased likelihood of developing nephropathy); daily use of methoxyflurane is not recommended; treatment with enzyme inducing drugs (e.g. barbiturates); cautious use of adrenaline or nor-adrenaline during methoxyflurane administration; caution in hot climates; use in the elderly and regular exposure to health workers. **SIDE EFFECTS:** Adverse Events reported in literature with analgesic doses include euphoria, drowsiness, sleepy, agitation, restlessness, headache, dizziness, dissociation, amnesia cough, choking, hypotension, nausea, vomiting, hepatitis, increased liver enzymes, increased serum uric acid, urea nitrogen and creatinine, diplopia and nystagmus. Hepatic toxicity in association with methoxyflurane is rare but has been observed with analgesic use. **DOSAGE AND ADMINISTRATION:** Up to 6 mL per day, vaporised in a PENTHROX Inhaler. The total weekly dose should not exceed 15 mL. Administration on consecutive days is not recommended.

**PBS Information: Emergency Drug (Doctor's Bag) Supply only.
For emergency pain relief.**



Medical Equipment & Gases Australia Pty Limited
9 Middleton Road Cromer New South Wales 2099 Australia
P 02 9944 0511 | F 02 9944 0512
www.megamedical.com.au